



Types of Care

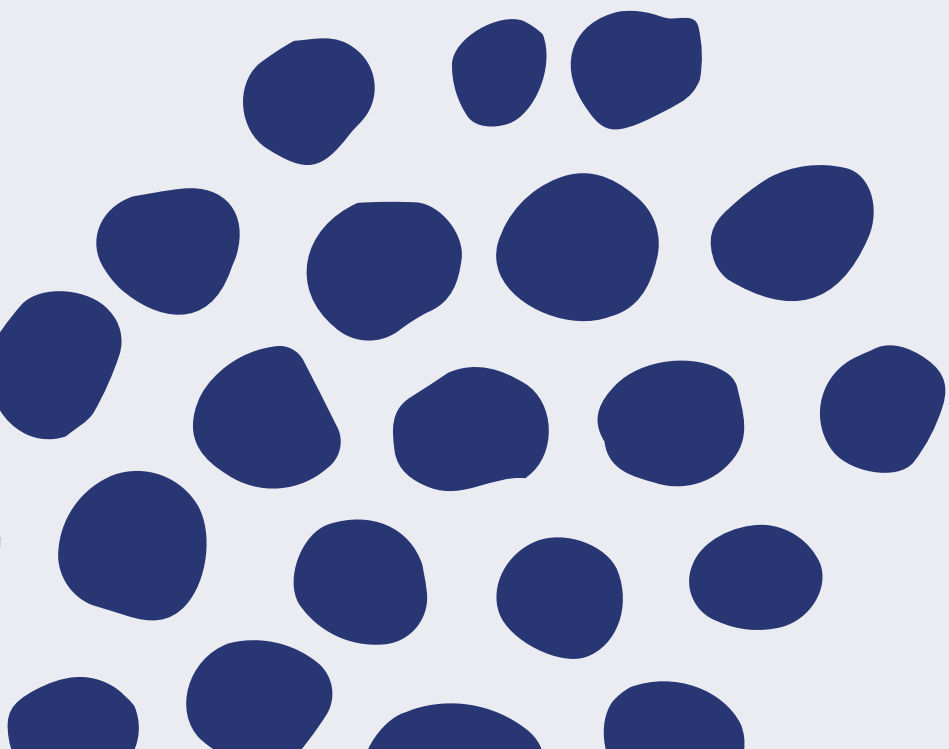
– Maria Tomlinson

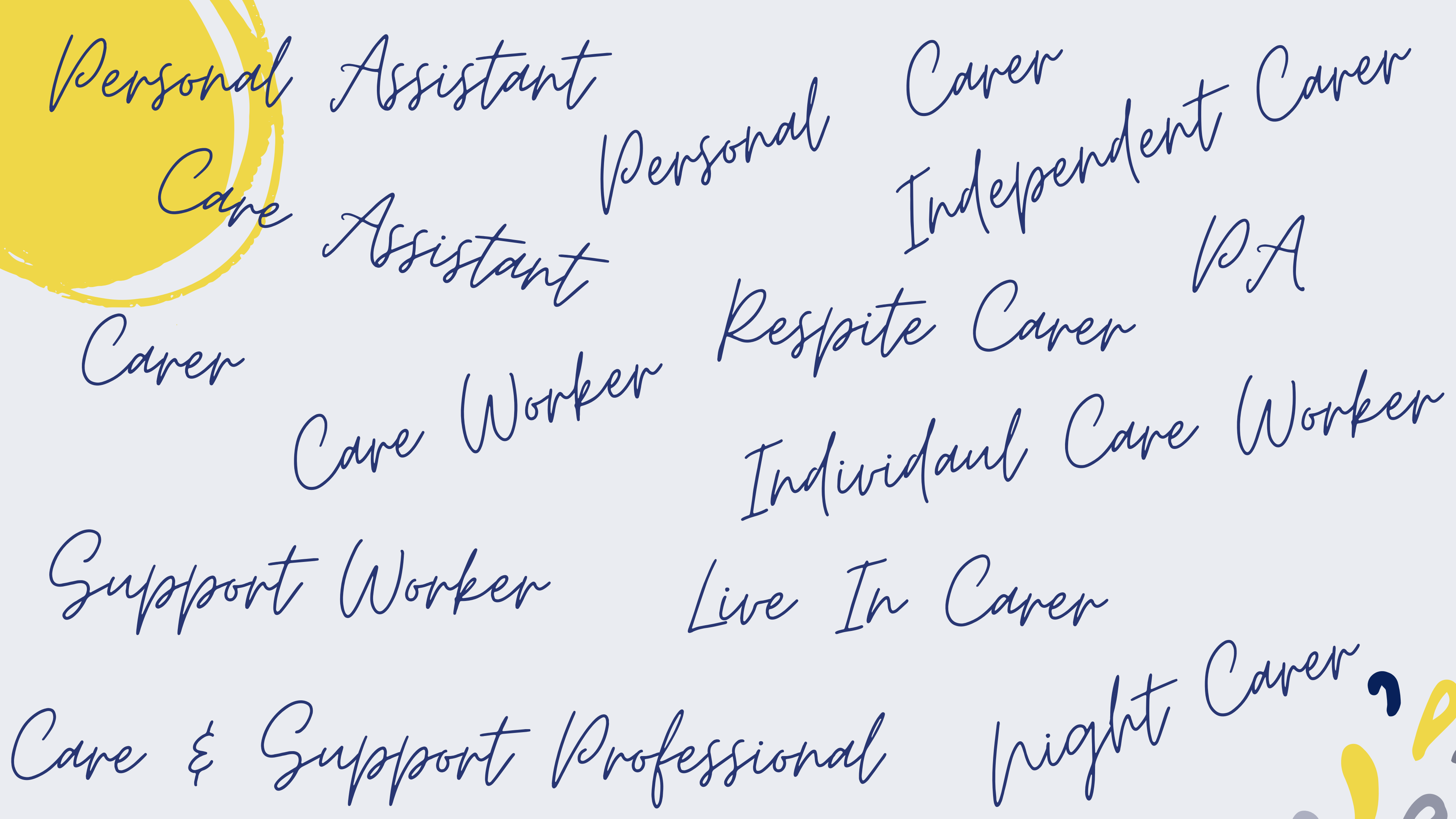
Self Employed Carer Coach

Founder of the Professional Carers Network



What to call
yourself....





Personal Assistant
Care Assistant

Personal Carer
Independent Carer
PA

Carer

Care Worker

Respite Carer

Individual Care Worker

Support Worker

Live In Carer

Care & Support Professional

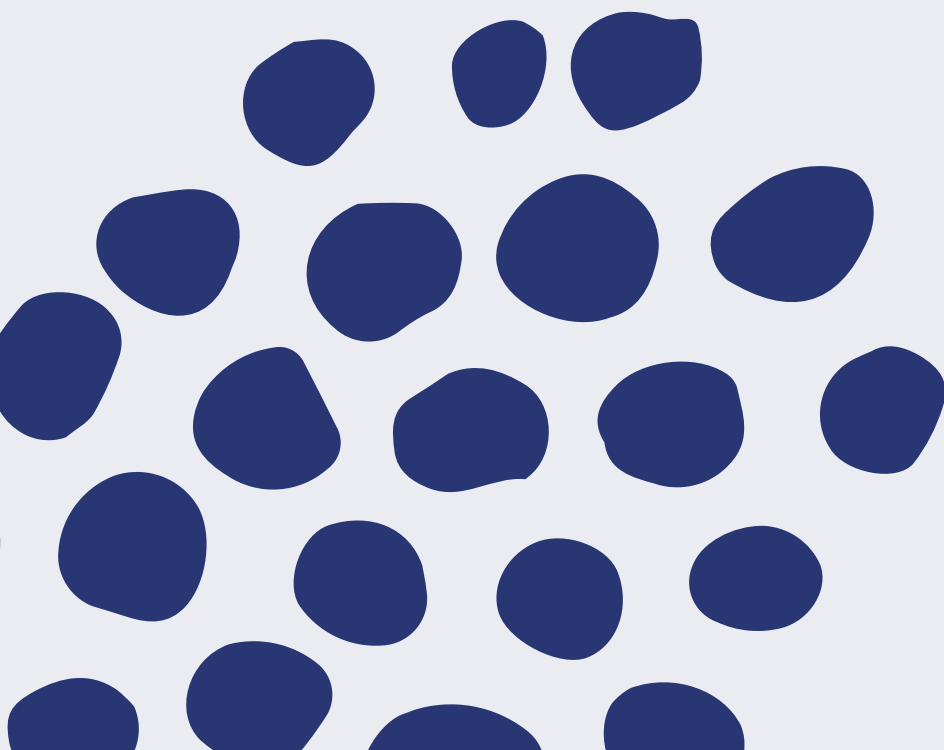
Night Carer


Types of Care

1. Domiciliary Care
2. Respite Care
3. Live in Care
4. End of Life Care
5. Night Care
6. Temporary Cover Care
7. Agency care
8. A Mixture!
9. Specialised Care



Domiciliary Care




- 
- Delivers care in their local community
 - Usually works with a 4-12 clients
 - Helps with routines

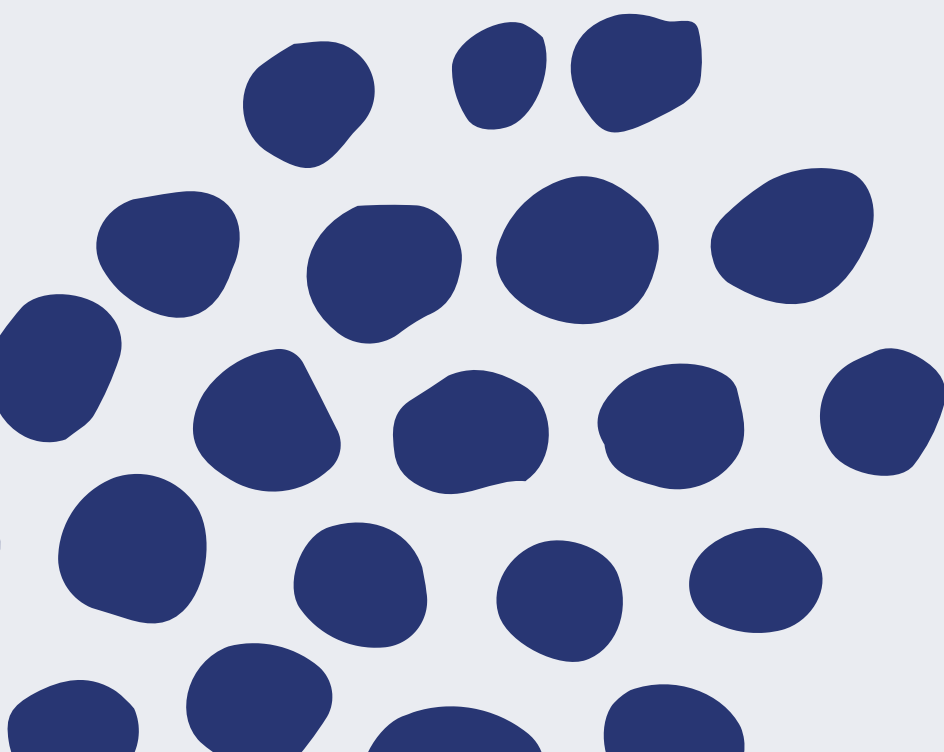
Pros


- Averages your work/pay out
- Variety
- Flexibility

Cons

- Need quite a few clients
 - Helping with routines can be samey
 - Can sometimes be dashing
 - Hard when someone gets poorly/upsets the routine
- 

Respite Care



- 
- Focuses on blocks of time to relieve main carers
 - Often dementia care or children with additional needs
 - Normally focused around doing an activity

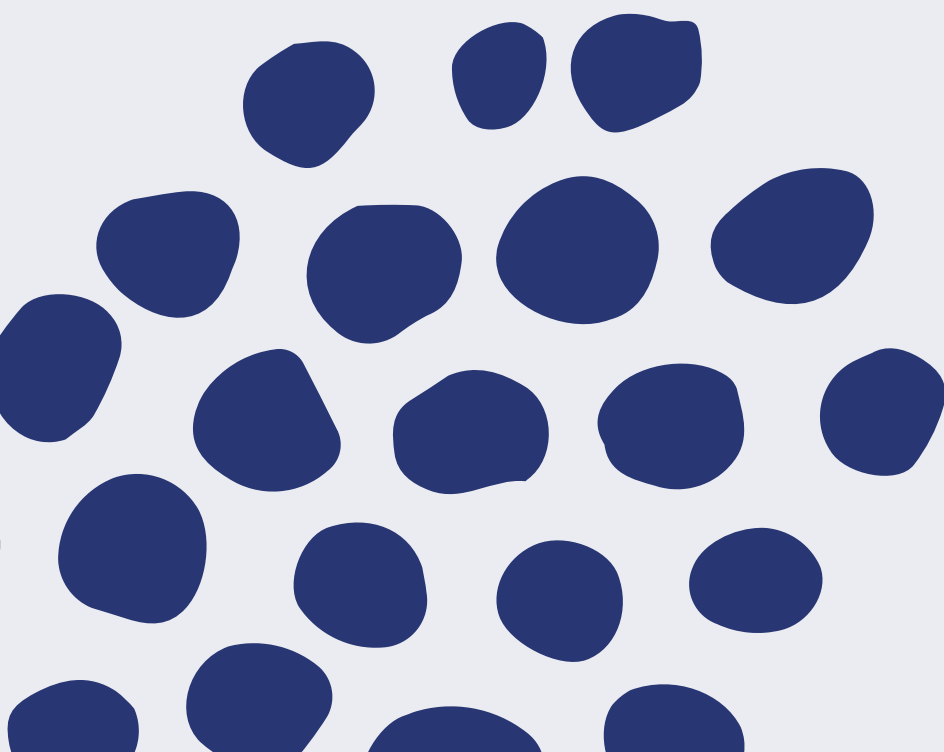
Pros


- Good pay as its often 4-5 hours per visit
- Less travelling
- Can be fun

Cons

- Can be quite hard core caring/entertaining
 - Can be hard to find enough clients that suit your availability
 - May take all day but only work 4-5 hours
- 

Live In Care




- 
- 24/7 with someone needing care
 - Often work for weeks/months at a time
 - Have a big break

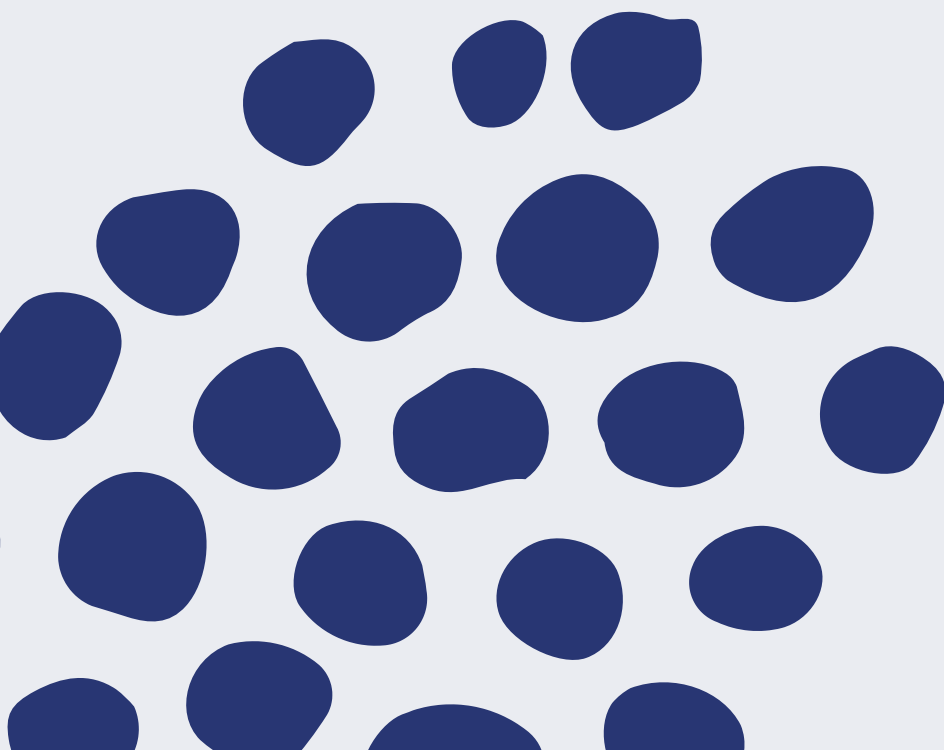
Pros


- Suits people who travel
- Nice to have one client to focus on
- Only need to find 1 client

Cons

- Can't always have a proper daily break
 - Really hard core caring
 - Takes over your life
 - Quite low paid
 - Can be hard to find a replacement job
- 

End of Life Care




- 
- Supporting people at the end stages of life
 - Focus on a good death

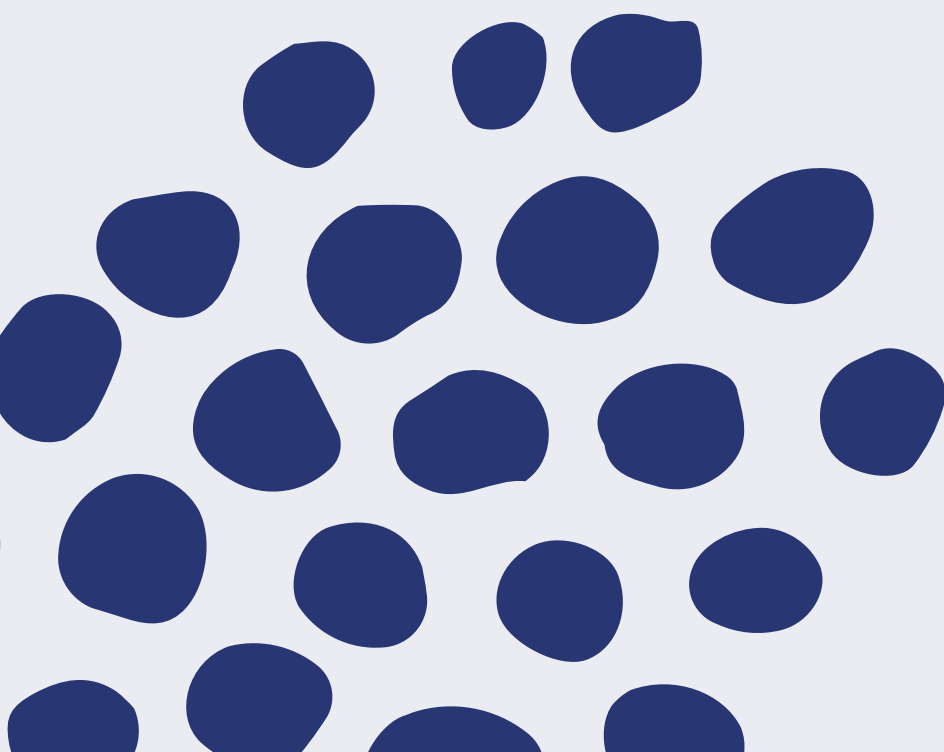
Pros

- Niche skill set
- Suits retired nurses
- Pays well

Cons

- Can't plan work very well
 - Often it's night time work
 - May need to travel
 - High turnover of clients
- 

Night Time Cave




- 
- Supporting people during the night time

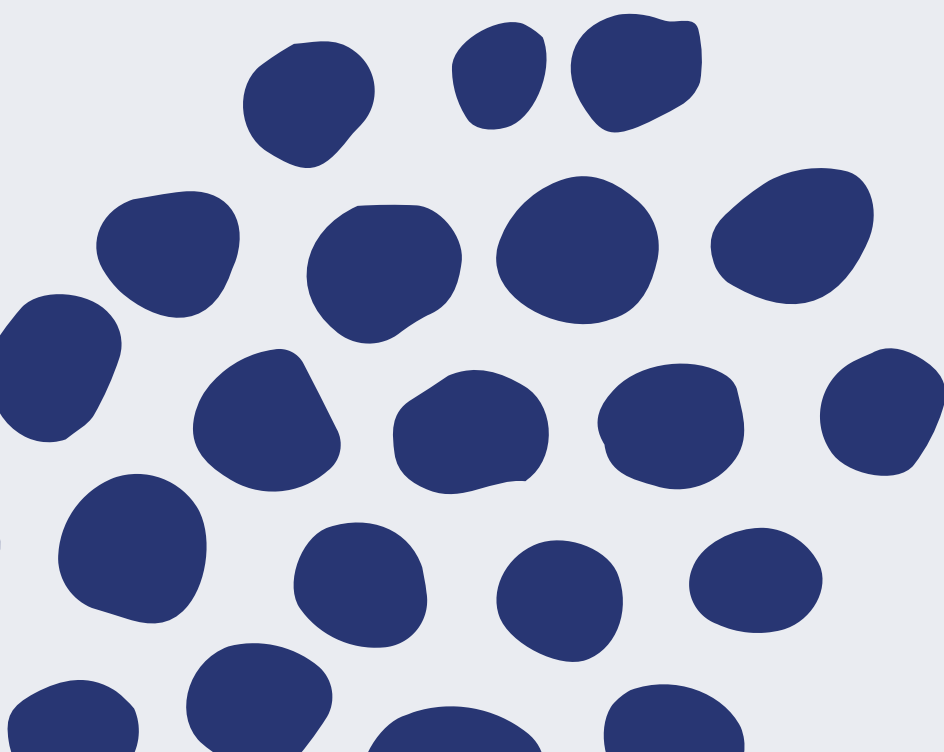
Pros

- Can pay well
- Can be quite hands off

Cons

- It's night work!
 - Not always easy to find enough of
 - Hard to top up with other jobs
- 

Temporary Cover
Cave



- 
- Supporting people for short periods
 - Maybe covering holidays
 - Rehab

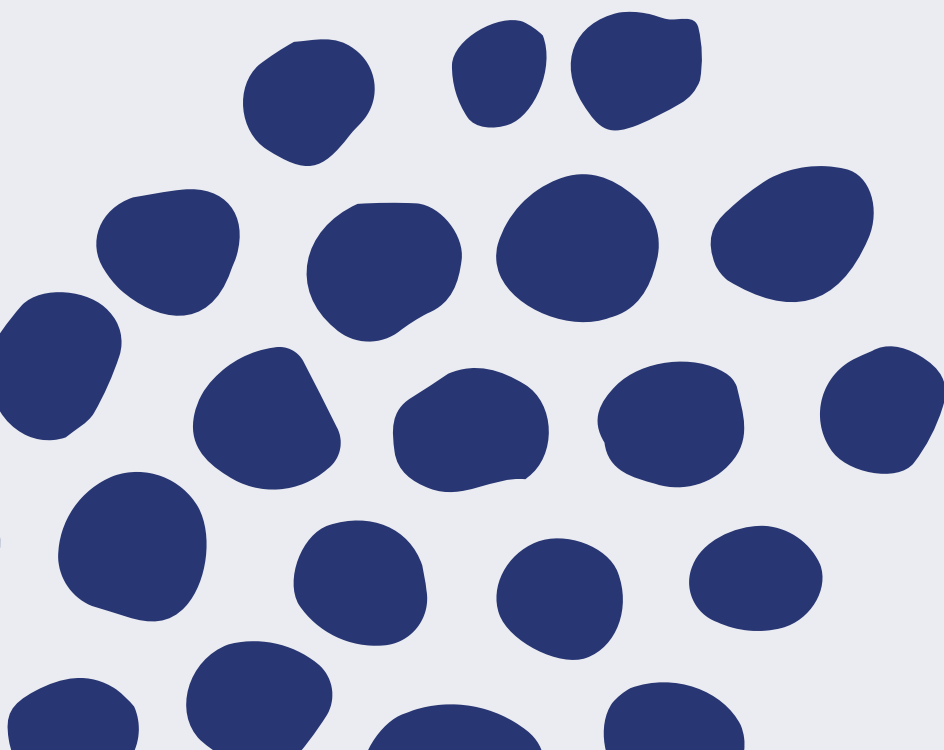
Pros

- Very flexible
- Great way to get started
- Solves a problem for lots of people!

Cons

- Hard to plan
 - Itty bitty work
 - Rehab may turn into more work
- 

Specialised Care



- 
- Specialise in a particular field
 - Dementia Care
 - Autism Care

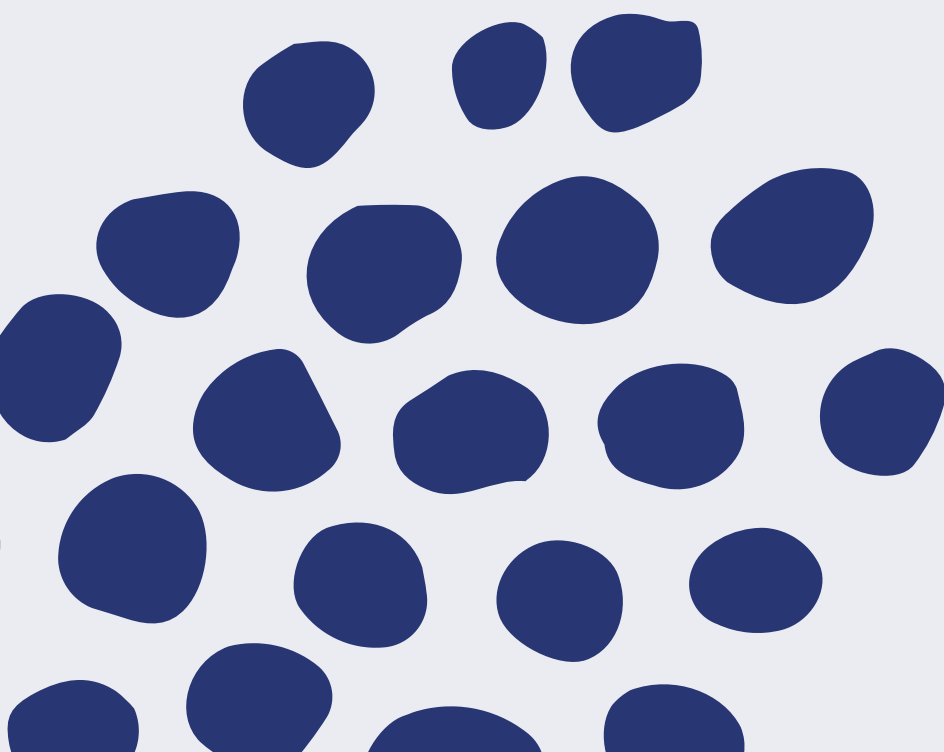
Pros

- Easy to advertise for
- Can be fun
- Can really uplevel your skills and knowledge
- Dementia increasing

Cons

- Maybe slower to build a reputation
 - Maybe unsociable hours if children
- 

Agency Care




- 
- Provide cover for companies
 - Ad-hoc work
 - My Work Mode

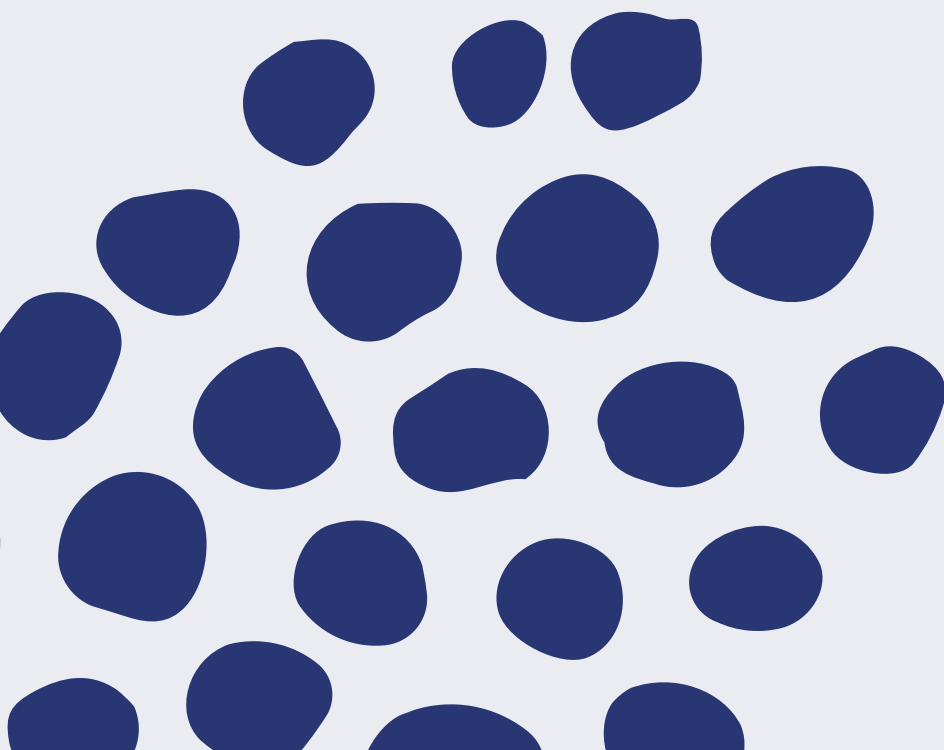
Pros

- Can be an easy flow of work once you have a few companies
- Will get to know sameish people

Cons

- Likely will want you at the same time
 - Will be short notice
 - Will have to be accomodating to gain the work
- 

A Mixture of Care



- 
- Doing it all!
 - Domiciliary/respice/cover/end of life/specialised

Pros

- Lots of work available
- Variety

Cons

- Have to be organised!
 - Time off can be tricky
- 



You've got this!

