

Difference Between a Self Employed Carer and an Employed Carer

– Maria Tomlinson

Self Employed Carer Coach

Founder of the Professional Carers Network



TRADITIONAL CARE MODEL

person needing care



care company



carer

Carer is told by company:

- what shifts to work
- who they work with
- what tasks they can undertake
- earns £9.50-£11ph
- has work colleagues
- can get guidance from company

SELF EMPLOYED CARE MODEL

person needing care



self employed carer

Carer is their own boss :

- works hours to suit their lifestyle
- decides who they work with
- can provide bespoke services
- earns £18-£25ph
- access to carer network
- access to training, support & insurance through the Professional Carers Network

Employed Carer

Average pay is £9.50-£11 per hour

Is told what to do by their boss

Is told where to be and when by someone else

Has to follow their companies policies and procedures, so for example may not be allowed to change the lightbulb, put the wash machine on or shower someone everyday.

Takes travel time out of the visit slot

Wears a uniform

Will visit multiple people each day and never consistently see the same people

Self Employed Carer

Average pay is £18-£25 per hour

They are their own boss

Has full control of their diary

Is able to use their own initiative and undertake any task that need doing.

Allows for travel time between visits so people get their full service

Doesn't wear a uniform

Consistently sees the same people and the people know who is coming to help them.

Employed Carer

Has to complete daily paperwork for CQC

Can often be stressed and overworked as they need to see a lot of people in a short amount of time

Has to stick to what is agreed to by management

Is entitled to sick leave and holiday pay as per their contract

If sick or on holiday, the company will arrange cover.

The company pays NI and tax out of the employees wages

Self Employed Carer

No paperwork is required to be completed unless requested by the family

Does not see masses of people each day so has time to build relationships with people, does not feel stressed or overworked.

Can offer a flexible service and impromptu activities to help enrich the clients life.

Has to put away money in advance for holiday pay and sickness pay. No limit on holidays but they do need to deliver a service.

Has to arrange their own cover or people will be without care

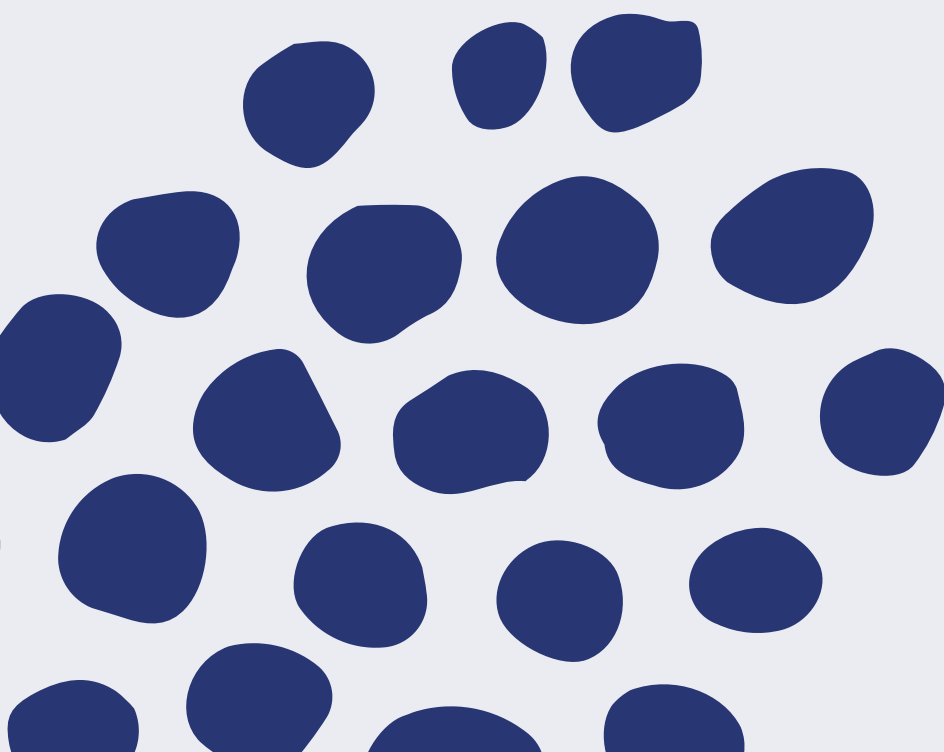
Need to submit a self assessment tax return to pay their own NI and tax




The Big Difference simply comes down to this...



Responsibility!



- 
- You need to find your own work
 - Pay your own tax
 - Keep your training up to date

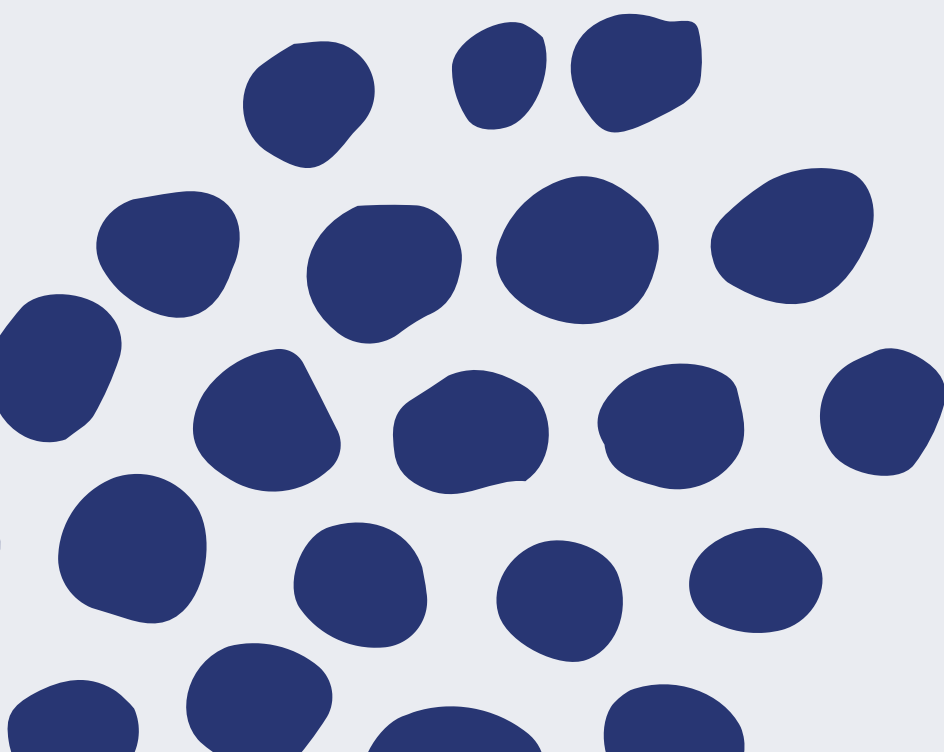
But because you take on more responsibility.....





You Get A LOT
better rewarded!!



at no extra cost to your
client!



- 
- Better off financially
 - More fun
 - True job satisfaction
 - End each day truly knowing you have made someone else's day better
- 

And we are here at
PCH to help you
every step of the
way!

